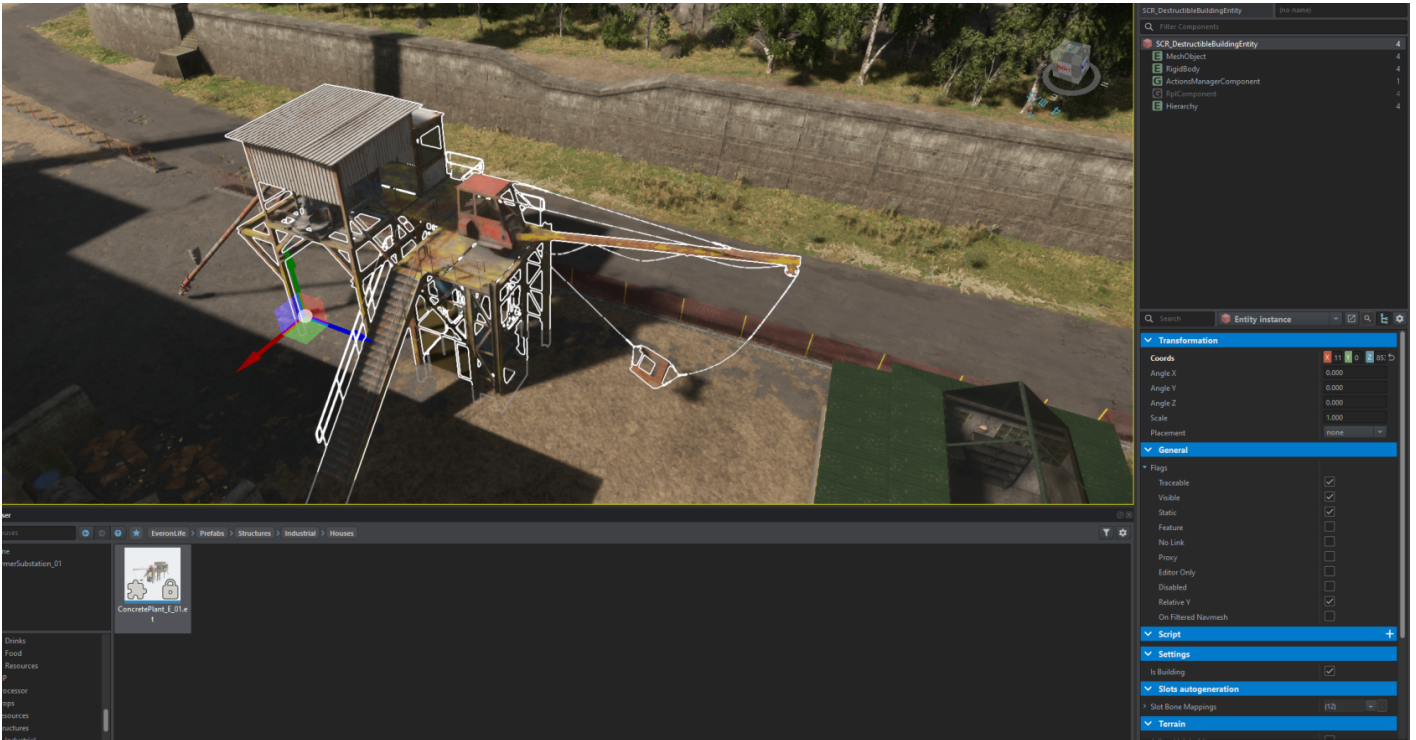


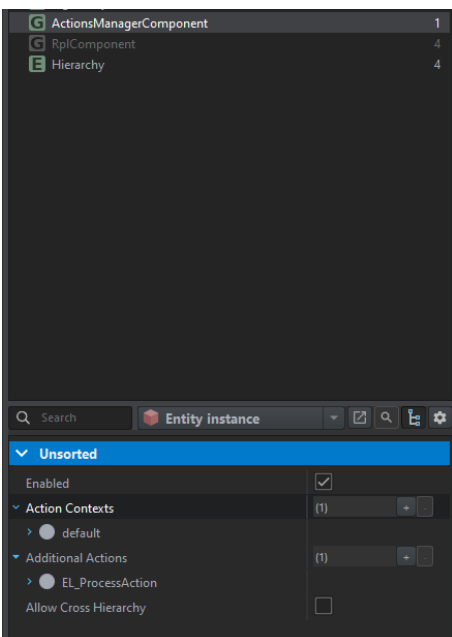
Find help on the FRENCH REFORGER MOD discord if you need ? Check our progress about this wiki here ?

Create a transform building

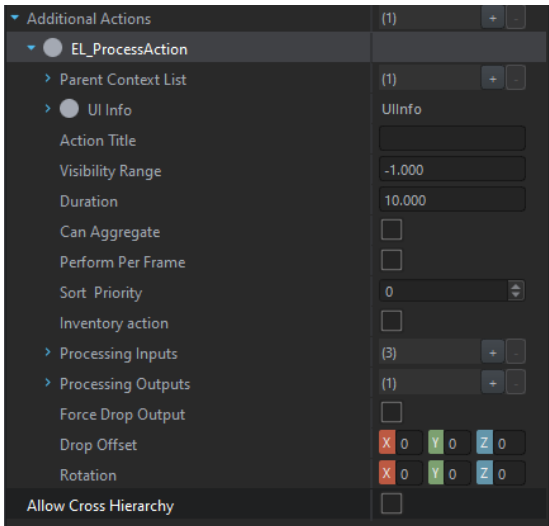
we are using the same everon and looking after the ciment process:



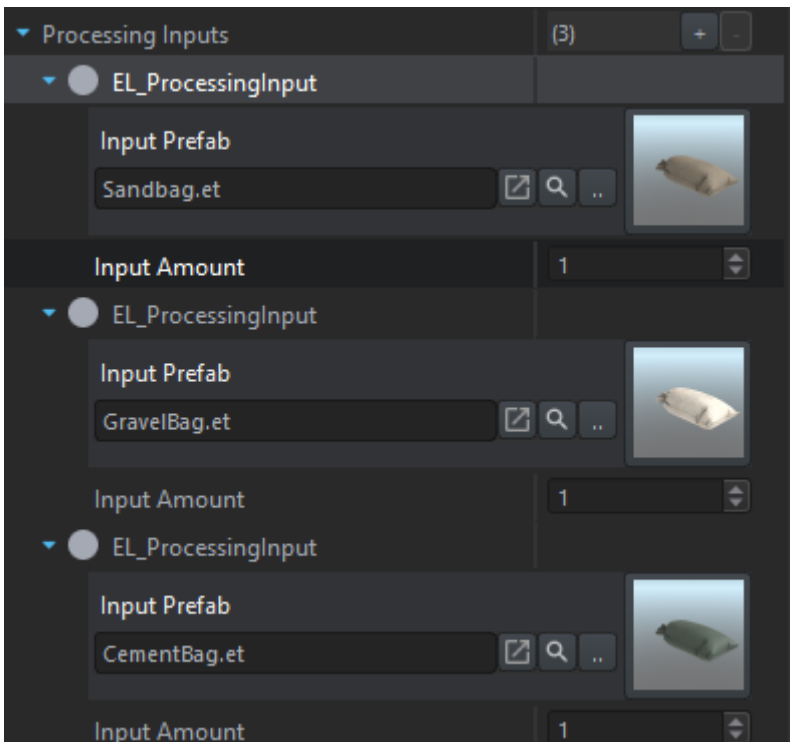
when looking to the action manager we have information on how its working:



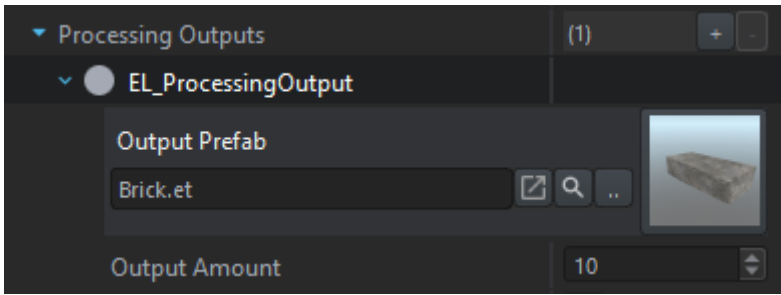
as we can see we have 3 input prefab and 1 output:



we need to collect all 3 to get the output, as we can see we can tell how many of each ingredient we need:



After that we put whta prefab as an output we have and select how many we have:



Revision #1

Created 2024-12-02 12:45:59 UTC by Benjamin

Updated 2025-02-21 14:09:18 UTC by Benjamin