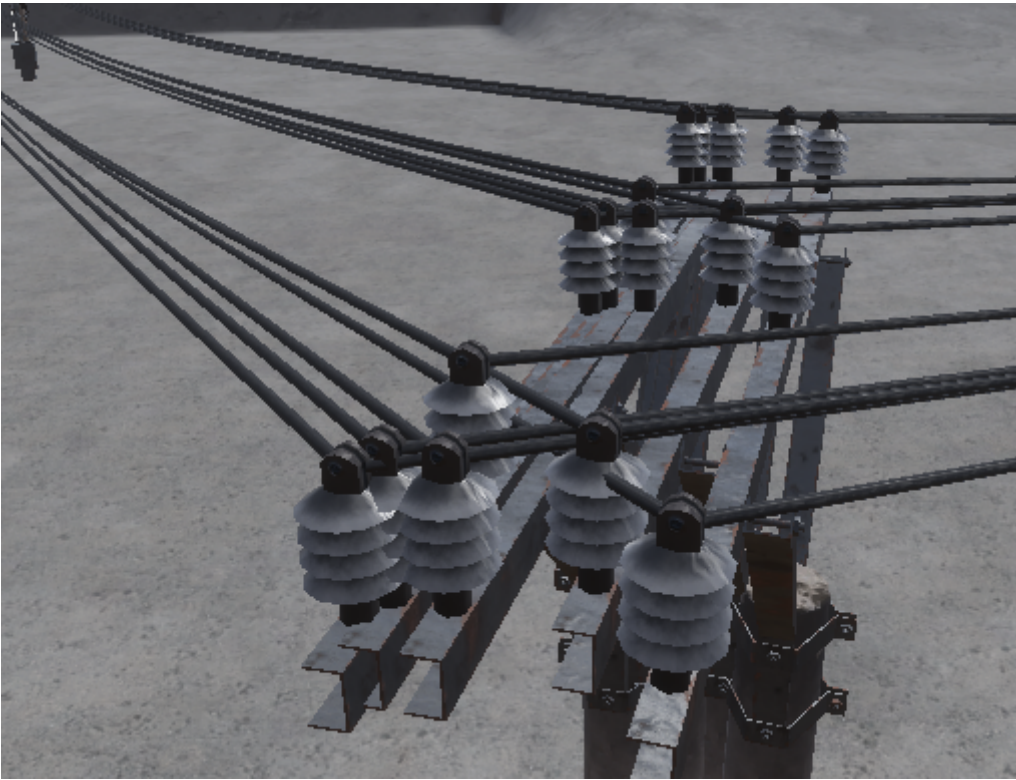


Find help on the FRENCH REFORGER MOD discord if you need ? Check our progress about this wiki here ?

Global troubleshooting

- [Duplication power line bug](#)
- [Instant crash on the workbench](#)

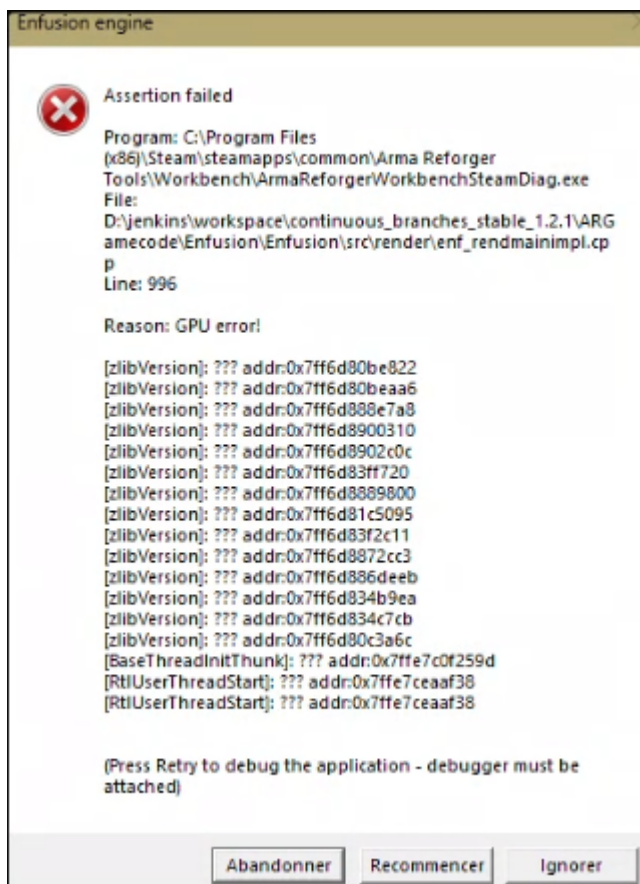
Duplication power line bug



Solution: Unlocking the layer that contains GenericWorldEntity

Instant crash on the workbench

During a failed import or a mistake, the Workbench might encounter a crash error that gets recorded in the cache, causing it to crash instantly every time you open your mod.



Example of an error message you might encounter.

1. Try creating a new mod and importing your 3D models (this helps determine if your model is causing the Workbench to crash)

The Workbench may crash if your model has too many faces/vertices or if it is too detailed.

If you can use your model in another mod, then the cache of your mod is likely corrupted.

2. Reset the Workbench settings and clear the Workbench cache.

In Steam, you will add the startup parameter. "-clearSettings"

link on how to do it: <https://help.steampowered.com/fr/faqs/view/7D01-D2DD-D75E-2955#:~:text=Trouvez%20le%20jeu%20dans%20votre,propri%C3%A9t%C3%A9s%2C%20puis%20lancez%20le%20jeu.>

Launch your mod, and it should work properly.

Be careful not to forget to remove the argument afterward to avoid resetting your settings every time you start the Workbench.