

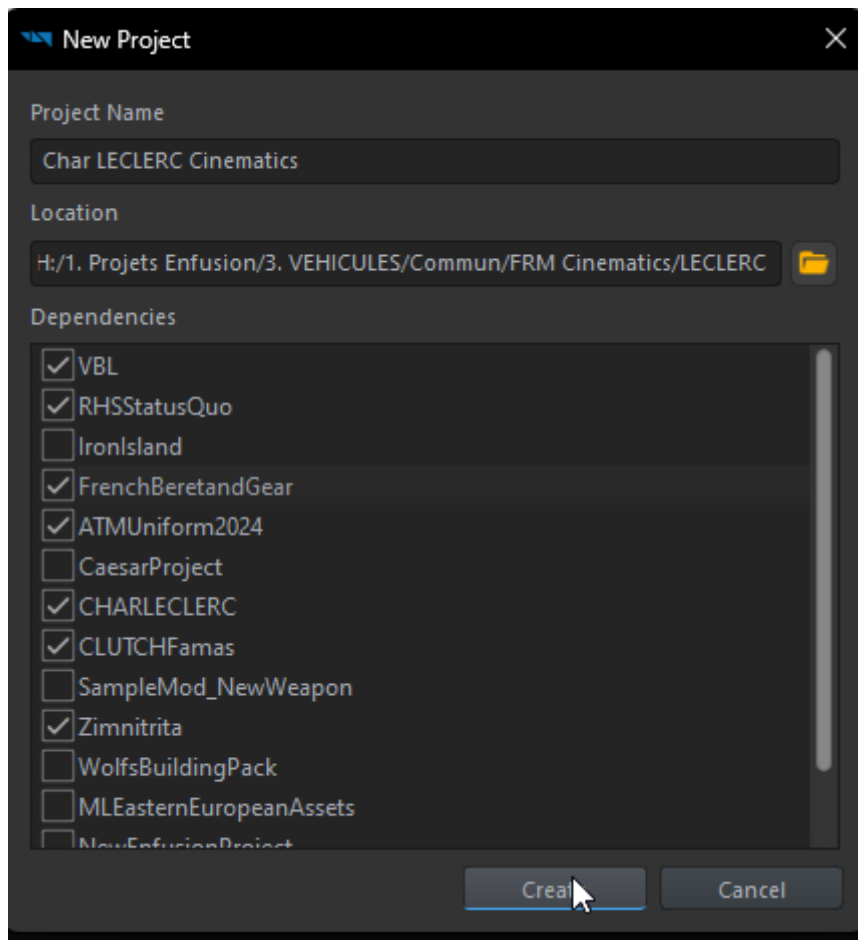
Find help on the FRENCH REFORGER MOD discord if you need ? Check our progress about this wiki here ?

How to create a new cinematic ?

1. Set-up a Scene

1. Create a new project

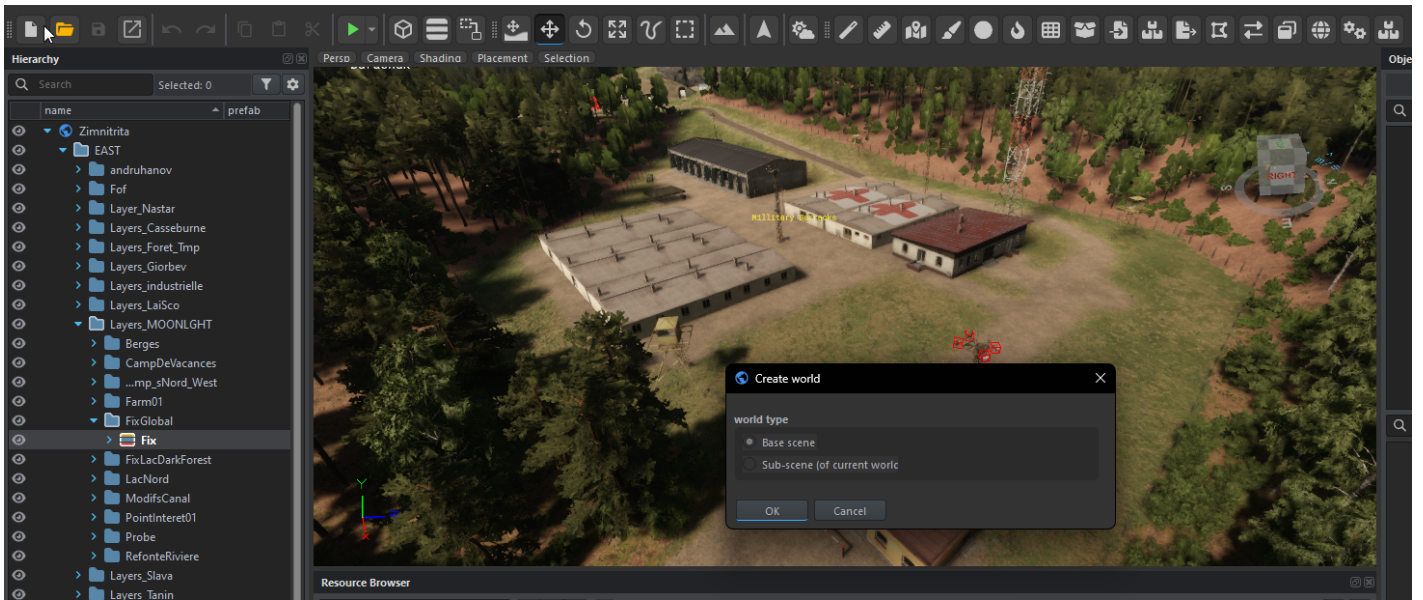
Attention: Don't do your cinematic in your main addon /!\. This could create conflicts and it will add useless weight for players.



With a cinematic addon, you can add dependencies without worrying too much about your mod being buggy, used only once or a few times.

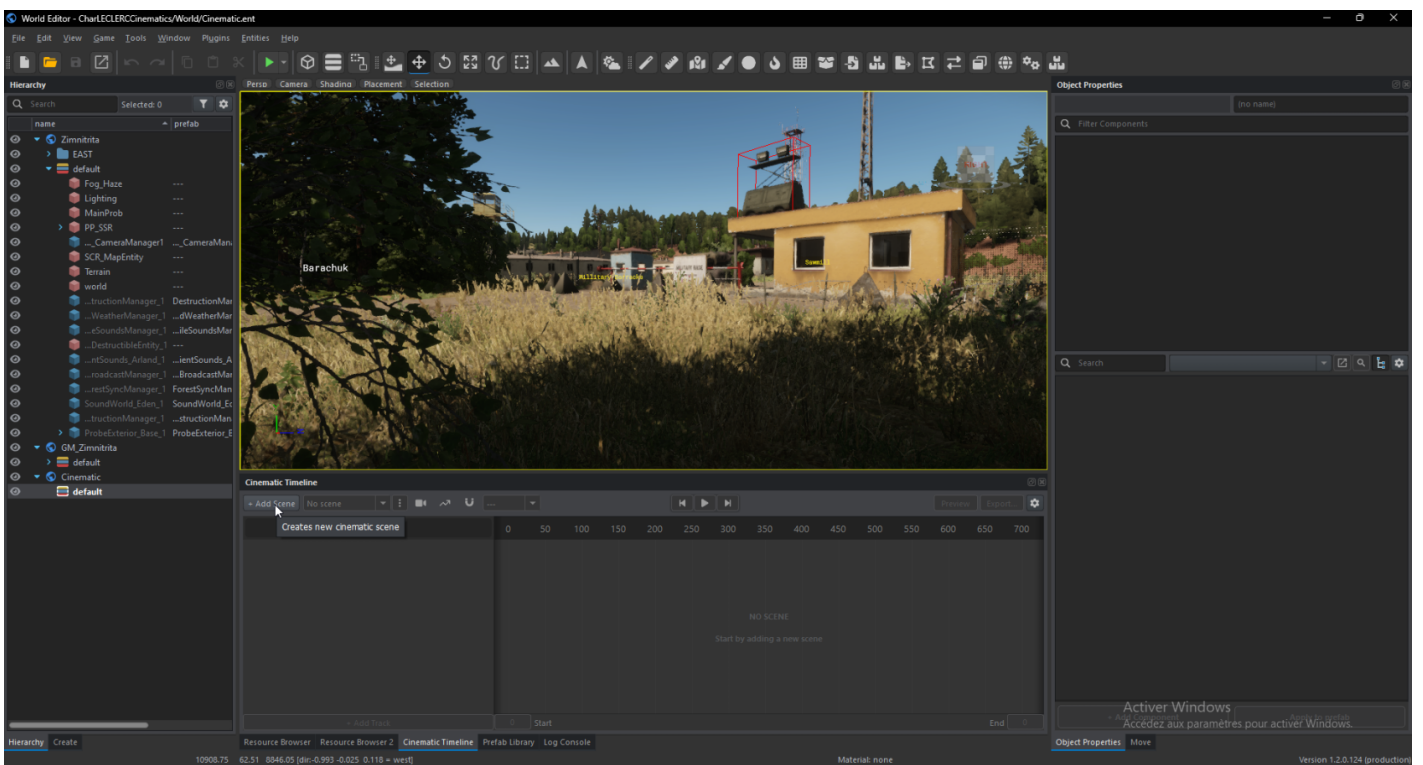
Attention: Don't publish to workshop a Cinematic addon, it's useless.

2. Create a sub-scene of your world



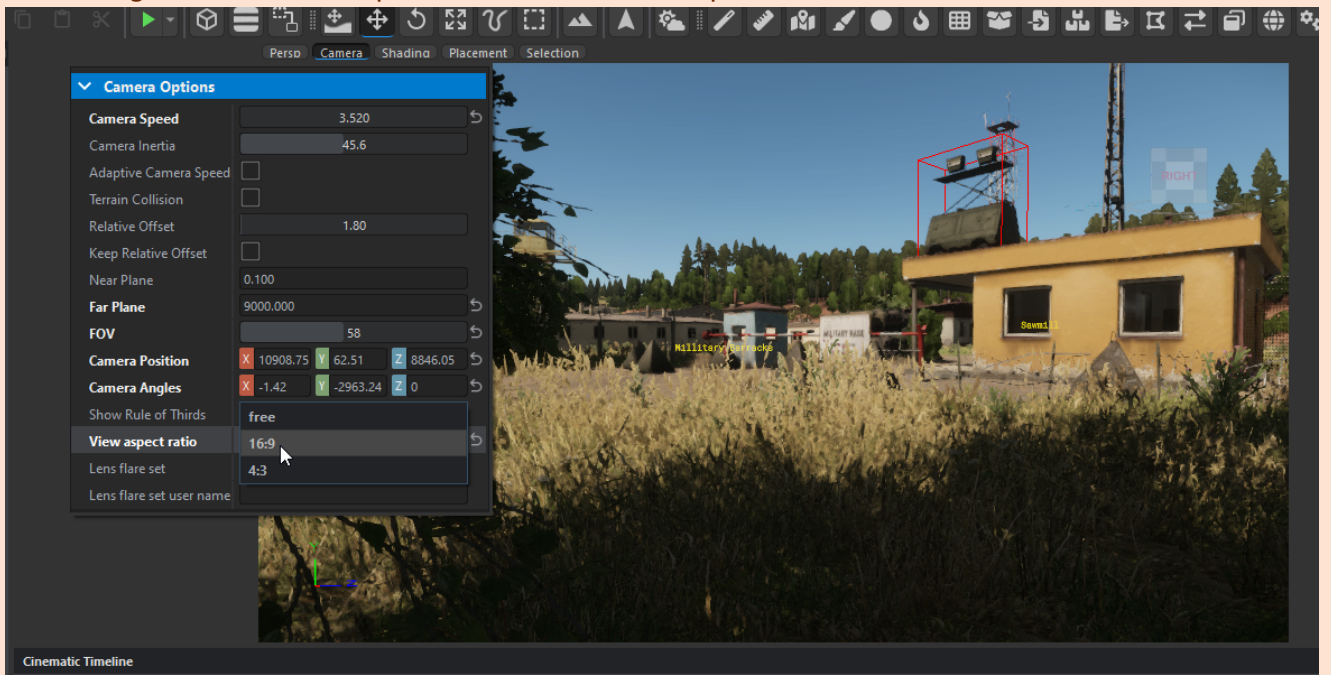
Create a sub-scene of your cinematic world and save it in your Cinematic addon.

3. Create a 1st Scene



Pour ce faire, allez dans Cinematic Timeline puis Add Scene et donnez lui un nom

Don't forget to set 16:9 aspect in Camera/View Aspect Ratio



Once that done, you can continue the tutorial ☐☐

2. Paramétrer l'environnement de votre scène

Revision #2

Created 2024-12-07 20:47:22 UTC by Lucas / MOONLGH

Updated 2024-12-07 21:25:37 UTC by Lucas / MOONLGH